

TELEPHONE

From: Major P.D. MUDD

~~CONFIDENTIAL~~

UNCLASSIFIED



AUSTRALIAN MILITARY FORCES

1 DIV INT
8 NOV 83
DR

Quote in Reply

DO/PDM/14/66

ADDRESS

103 Sig Sqn
AFPO 4
GPO SYDNEY

28 Dec 66

Lt Col K.J. TAYLOR
1 Sig Regt
Milpo INGLEBURN
NSW



Dear Colonel Taylor,

Operations

This month we have been engaged in two route security operations, securing route 15 from BARIA (3760) to PHY MY (2574) for the movement into the country of two new US brigades. There was nothing very exciting in these operations. We deployed our normal re-broadcast station on V.C. Hill at VUNG TAU.

Signal Centre

The installation of our permanent signal centre is now under way and I hope we will be able to move most of our operations into it next month, probably all except cipher. The switchboard is already operating.

I will attach a diagram of the layout in the building. I think it is fairly self explanatory. In the teleprinter room there is provision for eight positions, each consisting of TT-4, TT-76, KW7 and TH-5. In addition there are two tape preparation positions consisting of TT-4 and TT-76. In the planning stages we had a number of changes in the circuits we expected to operate from here. At one stage we expected the RAAF circuits to be included, but they have subsequently been moved. At another stage it seemed likely that the US circuits to 2 Force V would move into the building, but this has fallen through. Now it looks as if we will have duplex circuits to SAIGON and VUNG TAU using positions 1 to 4, provision for a simplex link to a forward task force HQ on position 5 and the remaining three positions spare.

The equipment room contains mainly an IDF and a jackfield, with just a few other pieces of equipment. The radio room is the operator's position for the remote keying of the control station on the TF Tg net.

The switchboard now consists of two SB-86's, at present providing 77 locals and trunks, and is expected to continue to expand. It is now manned by two operators during daytime working hours and one at night. You will realise that this is not possible with our present establishment and I am having to use non-switchboard operators. I have put up a submission asking for three more switchboard operators.

The delay in moving into the cipher office will be caused by the problems of obtaining the materials and making the necessary physical security arrangements.

UNCLASSIFIED

~~CONFIDENTIAL~~

- 2 -

I DIV INT
8 NOV 83
MR

Camp construction

We have had a ^{spirit} of activity this month. The squadron headquarters building is built and occupied. We have concrete floors for the Sgts' and ORs' dining rooms and canteen. In addition, the 'Q' store and tech maint/tech store buildings are each half completed. Because of space restrictions it was necessary to build half of these buildings, move out of the existing marquee and then remove the marquee before the other half could be built. Tech maint has moved in and construction is just about to begin on the other half. The 'Q' store will take a little longer as we have a lot of shelves to build before moving in.

Regards,

Peter Whiddell

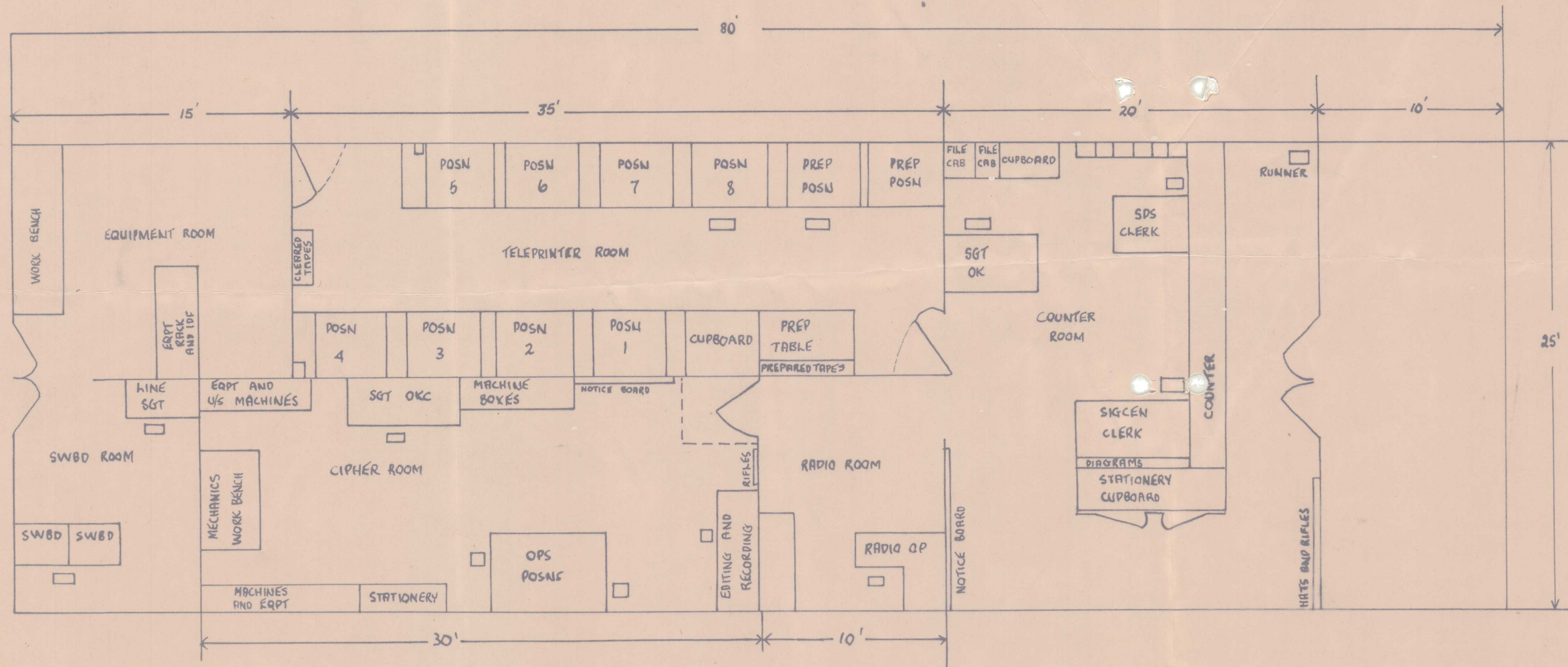
UNCLASSIFIED

~~CONFIDENTIAL~~

UNCLASSIFIED
~~CONFIDENTIAL~~

1 DIV INT
8 NOV 83.

SIGCEN 1st to 5th



UNCLASSIFIED
~~CONFIDENTIAL~~

FLOOR PLAN
IATF SIGCEN